

A Story of how I replaced my KES-400AAA Blue Ray Laser in Pictures!!!!
Enjoy and as always if you have any questions....please ask!

Please note, some of these pics were taken in a room with the most light of my house. If you can guess which room this is, good job! I did my repairs in a different room but painstakingly took these shots here. Again please work in an area with ambient light and as little static as possible. Always wear an anti-static wristband if you perform a DIY PS3 repair of any sort and again if you do not feel comfortable watching or doing any sort of repair to your system, **CALL SONY!!!!**

I assume no responsibility for any damage you may incur during this process. The pics are for your enjoyment. If you have any questions, please ask!

Here goes!!!

For this project, I used these 4 magnetic screw drivers. One is a star shape (not sure of the exact size it came as part of a multiple tool set) and the other two are standard Philips, one for eyeglasses, and one you can find in any standard size Phillips tool set. The 4th screw driver was a tiny eyeglass flathead driver pictured below on picture #9.



TIGUY99



TIGUY99



TIGUY99





TIGUY99

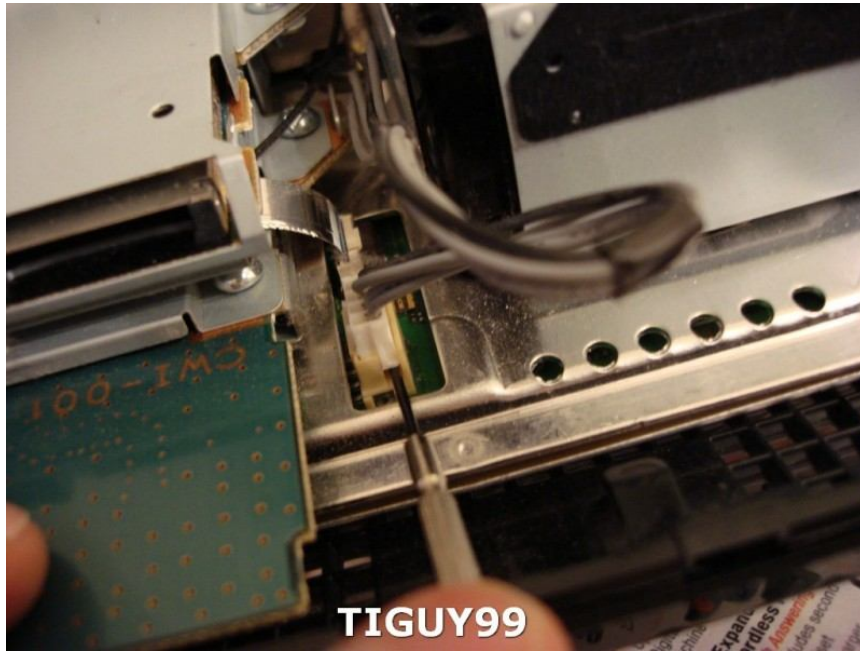


TIGUY99

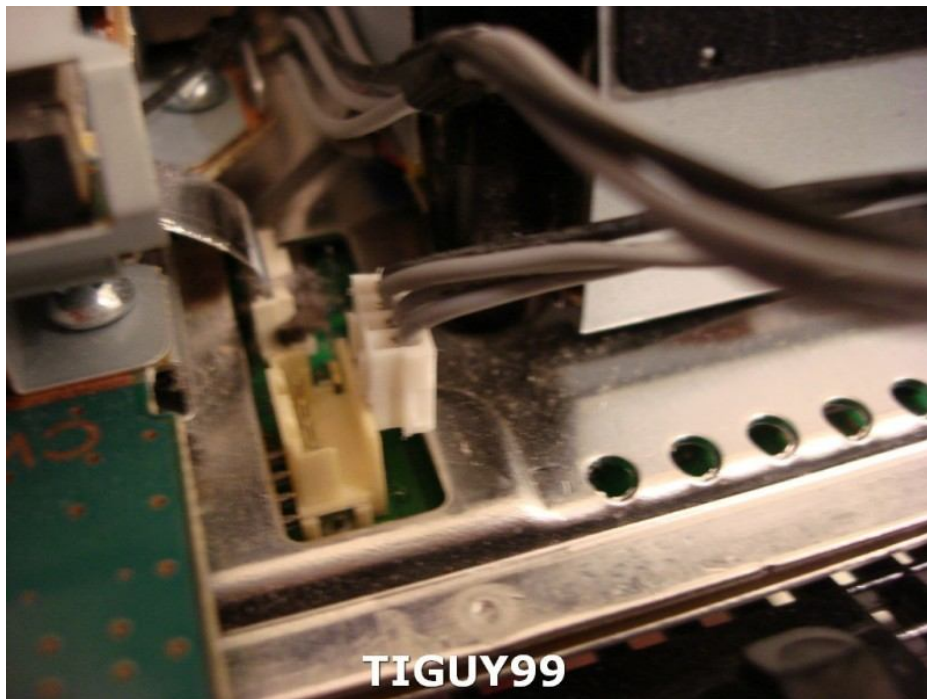
Carefully lift this part up from the rear toward the power button. Make sure you remove that silver L shaped part that holds the front glossy Playstation cover FIRST before you lift this section 😊

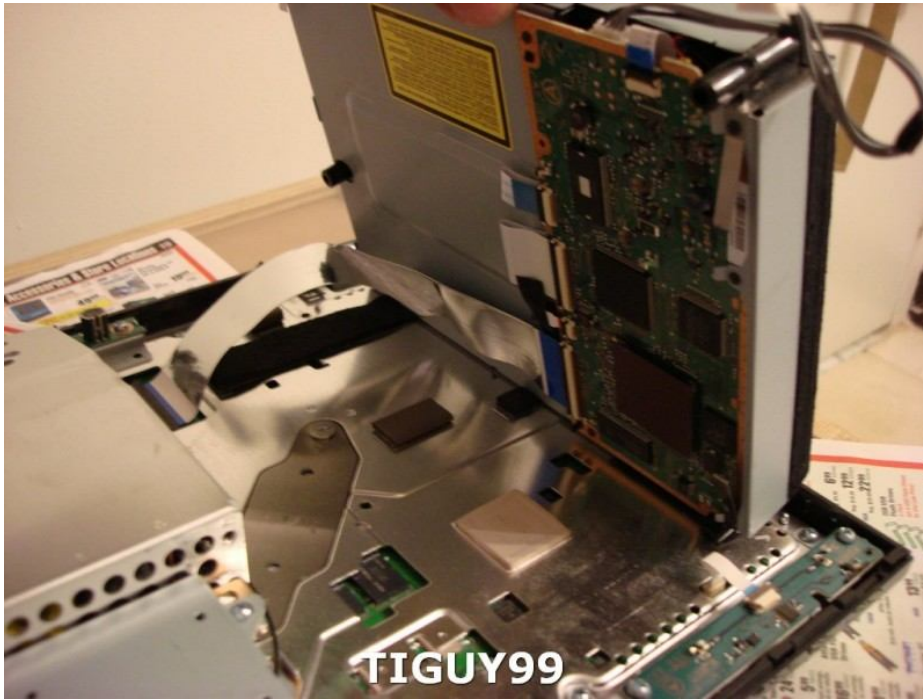


I placed my phone there for scale purposes of course 😊 its sitting on top of the PS3's blue ray drive on the right



Gently pry the blue ray power from the Motherboard. I used an eyeglass flathead driver....then pulled it by hand once it was 1/2 way





Remove the biggest silver/blue cable on the bottom of the blue ray drive by gently lifting the tiny black lever with your fingernail



It easily comes free revealing this ^ ^ Now set your console body aside. You're won't need it for this repair.

PLEASE NOTE:::::

I placed the PS3 on carpet ONLY for this photo. DOES NOT work in environments where static can build up on your fingers etc. Make sure you're wearing a static free wristband so you don't damage your precious PS3 internals. One shock and bye bye PS3. You've been warned



There are 3 black screws you're going to remove from the bottom of this case. Doing it this way, is much easier and safer than removing the board itself.

Next remove the 2 silver screws at the top of the case. Set these aside somewhere safe. Flip the drive over and gently lift the entire silver lid off and set it aside somewhere safe. It'll leave you with this below



Now you're staring at the blue ray drive internal casing. Note the disc magnet in the center.



TIGUY99

Remove it and set it aside somewhere safe



Remove the 5 black screws and set them somewhere safe



Gently flip the lip over like so ^^ to reveal the injured blue ray drive internals ^^.

If you've reached this part, take a deep breath. You're doing good. Remember, gentle is the word. Keep track of all your screws and parts you've set aside. Take a small break if you have to. You're in the home stretch.

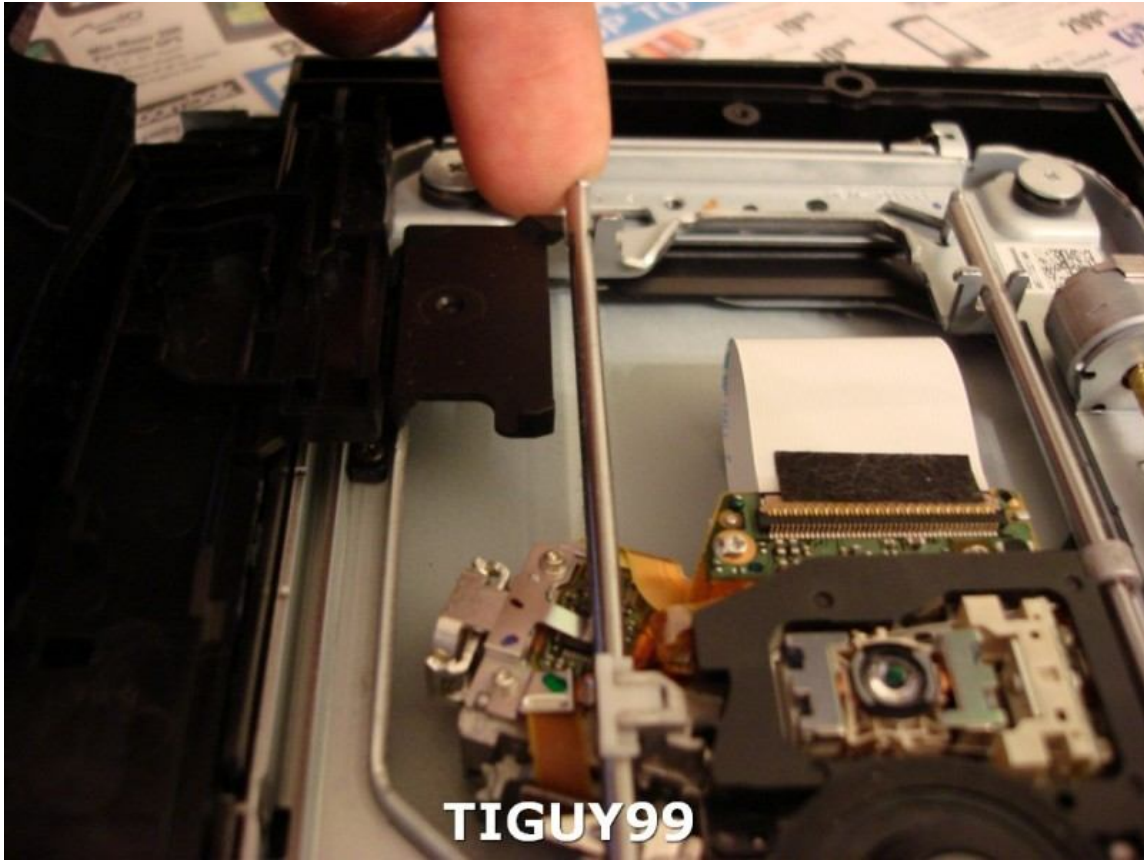
Now it's important that you **DO NOT TOUCH** anything else other than the KES-400AAA part. **DO NOT TOUCH** any springs or levers.



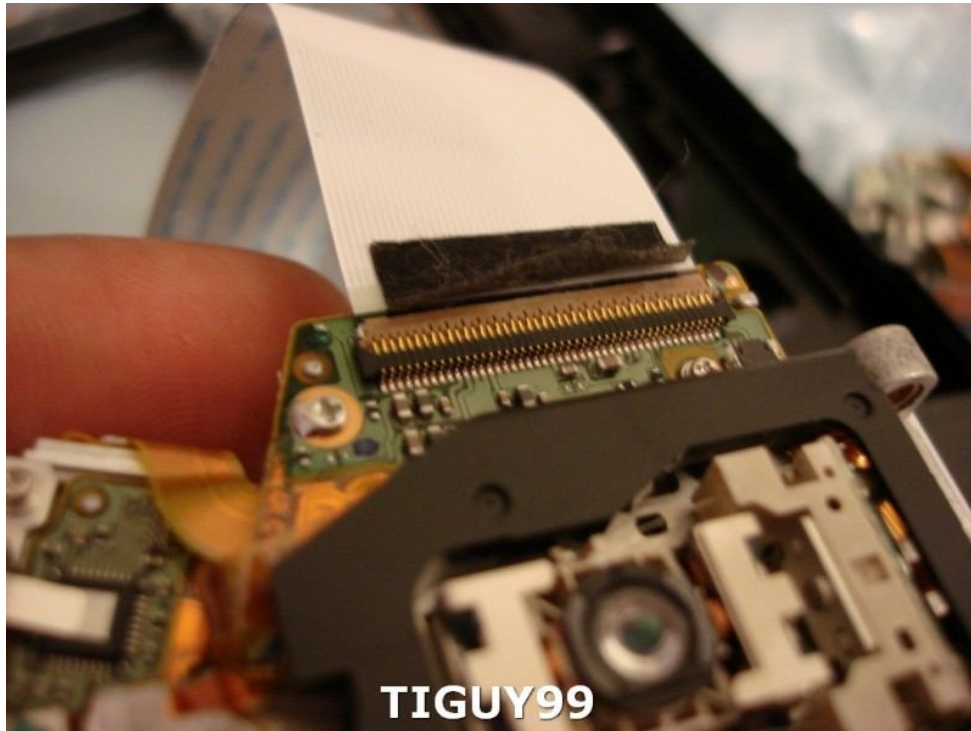
To remove the KES-400AAA part, there are 4 tiny black screws you're going to remove. They're right in front of the **BIG** silver ones



Safely remove the 4 metal brackets the screws were holding and set them aside somewhere safe.



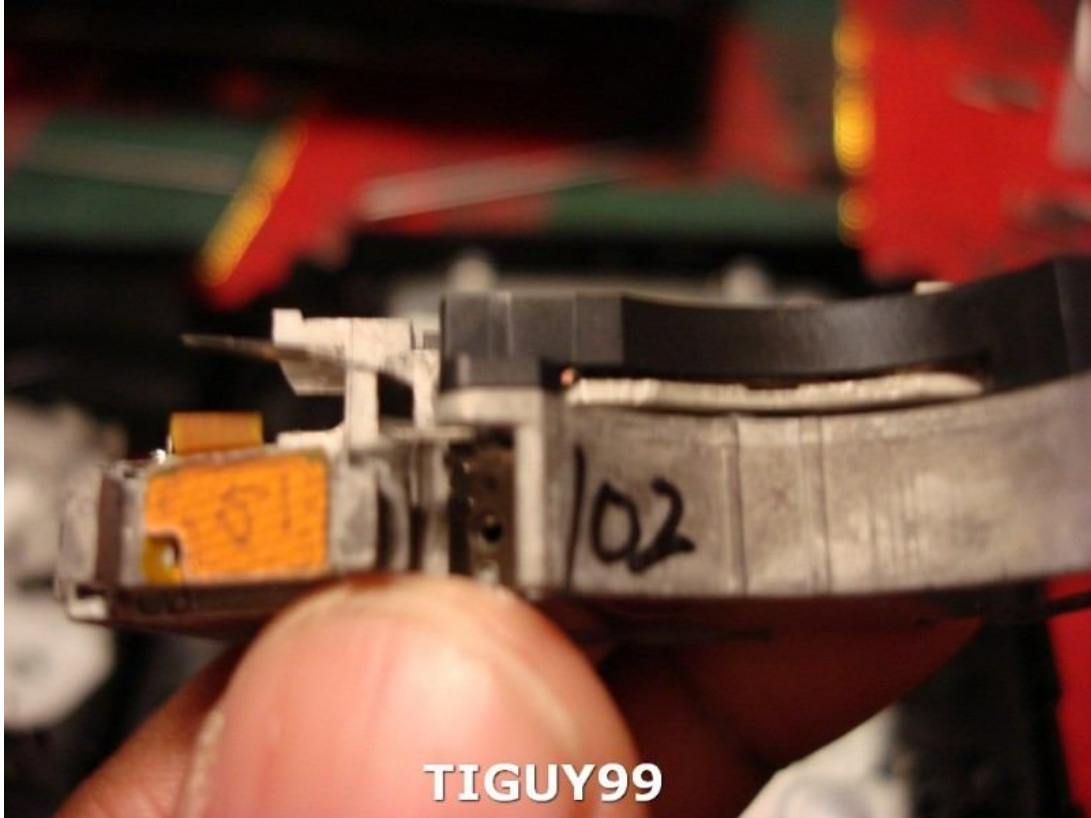
Gently lift and remove the metal rods from the drive



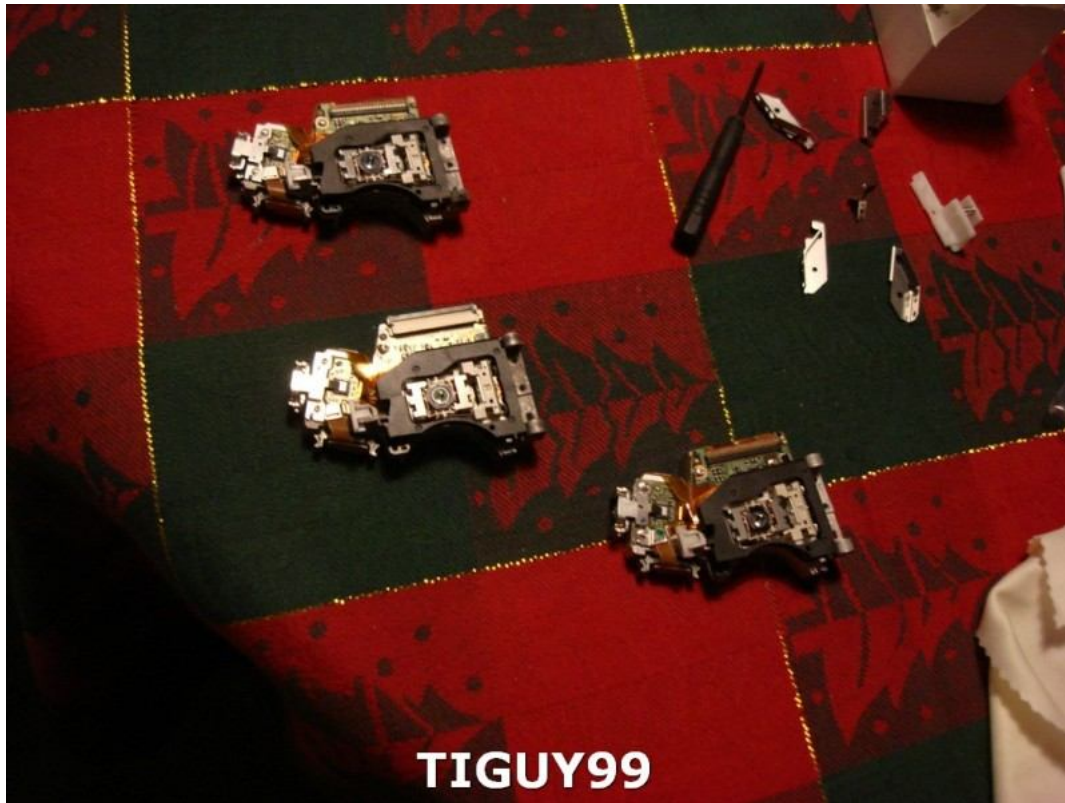
Gently peel back the black tape and gently lift up the lever with your fingernail. The defective KES-400AAA laser can now be removed.

NOTE.....

2 very important pieces will need to be extracted from your old laser. First note this metal L bracket screwed on the side. It appears as a tiny wing. Unscrew this part below



Set it aside somewhere safe. Take your old laser and flip it upside down. Remove the small black screw holding down the white plastic clip on the rear. Remove the white plastic clip. Set both the white plastic clip and the small black screw aside somewhere safe. Both are shown in this pic below...top right



Take the new laser and mount both the tiny metal L wing bracket AND the White plastic clip to the new KES-400AAA Laser by screwing them back on. Next, reinsert the ribbon cable into it's slot and clip it back in. Then, thread the poles back through the holes on the new KES-400AAA and notating how it was originally mounted, carefully place it back into the drive assembly again see the pic below for reference. Gently push the laser back into place like the picture below.



MAKE SURE IT LOOKS LIKE THIS before you go any further! Take a moment....check, double check....triple check!!!!

Next we're going to test the new KES-400AAA laser to make sure it's functioning properly before we reassemble everything

First, take those metal brackets and noting where each one came from, take the tiny black screws and screw each one back on.

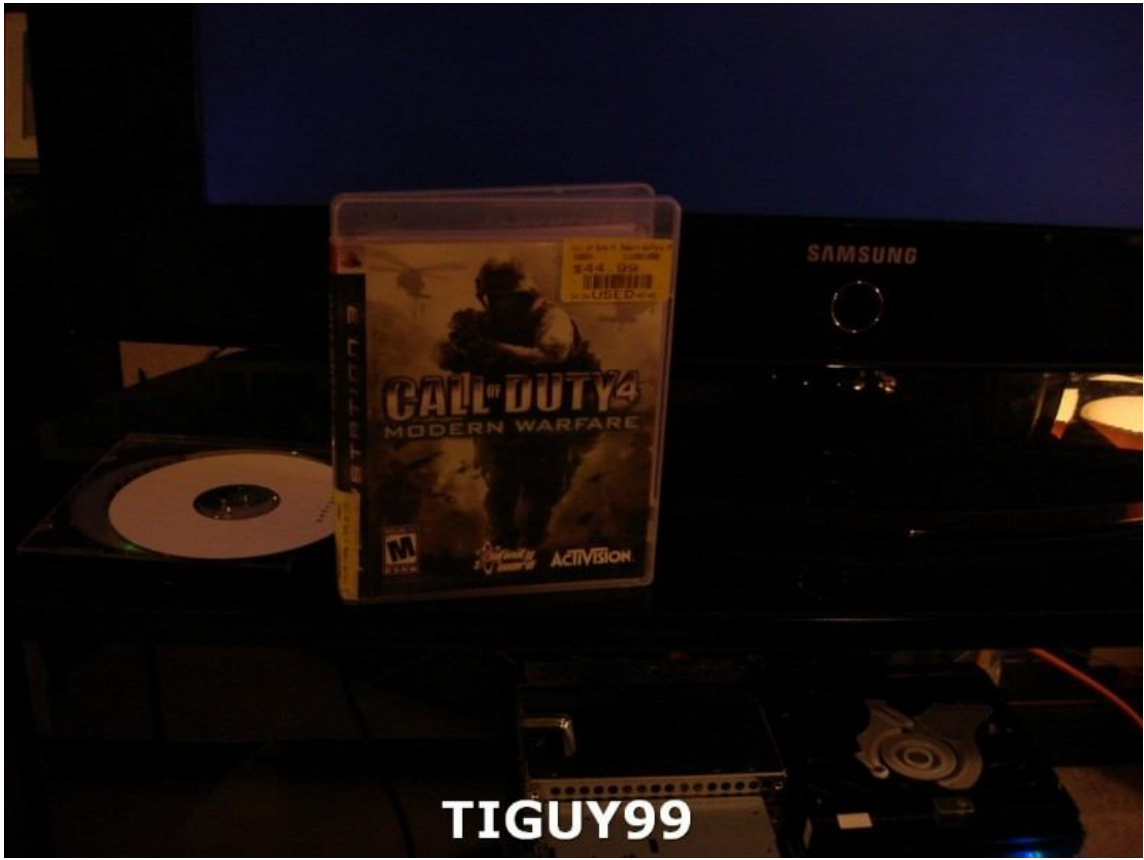
Second, take the lid and gently fold it back over so your drive looks like this. Put the white disc magnet back into place.



Now we're ready to test the new drive. Rescrew the 5 black screws you removed in this ^ ^ picture. Grab your console bottom and take the wide silver/blue cable and plug it back in. Gently close the tab.

Plug the blue ray power cable back into place and gently place the drive back into its space on the console. With the console sitting flat, SAFELY plug in your power cable and video cable.

Turn it on and test your disc by inserting it in the drive. IF you did everything correctly, your new drive should accept the disc and begin play as it normally would.

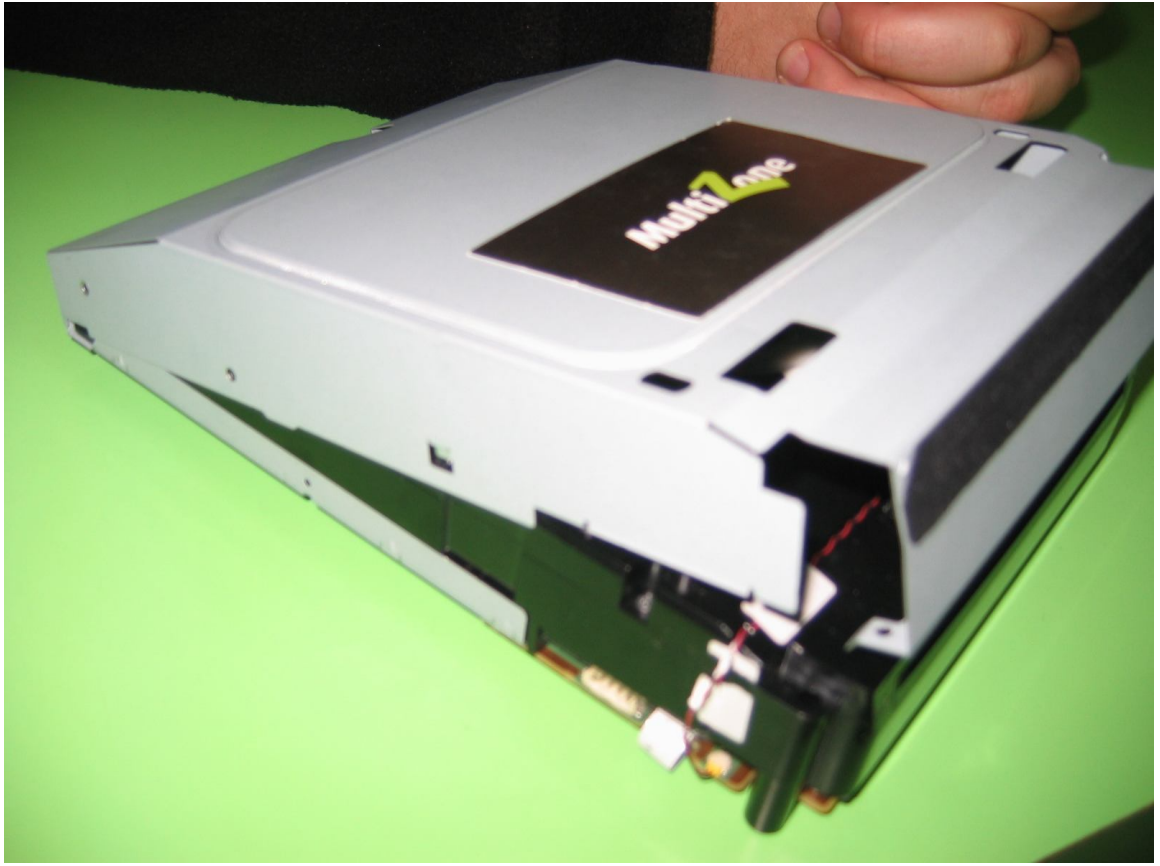


TIGUY99



When you get confirmation it works, eject your disc and power down your system. SAFELY remove your power and video cables and set the console aside.

Remove the blue ray power cable again and remove the drive as you did in the beginning. Take the blue ray drive metal lid and place it back on like so (had to borrow a couple pics to illustrate this step below. I didn't have good shots of this step taken. I'll have to do these later on when I have some time)





Rescrew the 3 black screws on the bottom of the drive and the 2 silver screws on top of the drive. Reattach both the wide silver/blue cable as well as the blue ray power cable and noting how everything was, reassemble your system. Test your media and enjoy your newly repaired PS3! Any questions, please ask

That is all!